

## IMPORTANT TIPS

- Place the mouldings in the room where they are to be installed at least 24 hours prior to installation.
- Polyurethane is a material that reacts to ambient temperature and humidity. During cutting, we recommend you add approximately 1/4 inch (0.6 cm) for each 8 feet (244 cm) of length, or 1/32 inch (1 mm) per foot (30 cm) of length to counter shrinking. Once installed, the mouldings should remain stable under normal conditions.
- For interior use only.

## REQUIRED MATERIALS

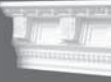
- Acrylic latex sealant with silicon.
- Lepage epoxy glue or Bulldog Grip PL Premium. DO NOT USE CONTACT ADHESIVE.
- Shrink-resistant latex wood filler.
- 2-1/2 inch (6 cm) drywall screws (gypsum) or larger, depending on the structure; 3 screws per medallion.
- 3 inch (8 cm) threaded shaft, or larger, depending on the lighting fixture.



235, rue St-Louis  
Warwick QC J0A 1M0  
CANADA

Tel.: 1 800 567-5813  
Fax: 1 800 363-5168  
e-mail: infodesign@boulanger.qc.ca

# Installation guide



Polyurethane mouldings  
for walls and ceilings

## INSTALLING MEDALLIONS

### CHOOSING THE RIGHT SIZE OF MEDALLION

- To determine the appropriate size of the medallion for the room in which it will be installed, divide the area of the room by 7.

#### For example :

10 foot (3 meters) by 12 foot (3.6 meters) room = 120 square feet (11 square meters) ÷ 7 = 17. Therefore, the diameter of the medallion should be approximately 17 inches (43 cm). You must also factor in the dimension of the lighting fixture's base.

- Apply a line of sealant all around the medallion at approximately 1/4 inch (0.6 cm) from the outer edge.
- Install the medallion on the ceiling, press firmly and screw into place.
- Remove any excess sealant with a damp sponge.
- Fill in the screw holes with wood filler to conceal.



## INSTALLING MOULDINGS

### 1- CROWN MOULDINGS with corner blocks and dividers

*Dividers and corner blocks facilitate installation and minimize waste. Corner blocks come in two sizes: for 4 inch (10 cm) crown mouldings and for 5-1/2 inch (14 cm) crown mouldings. The blocks are suitable for walls that meet at a 90 degree angle.*

#### Step 1

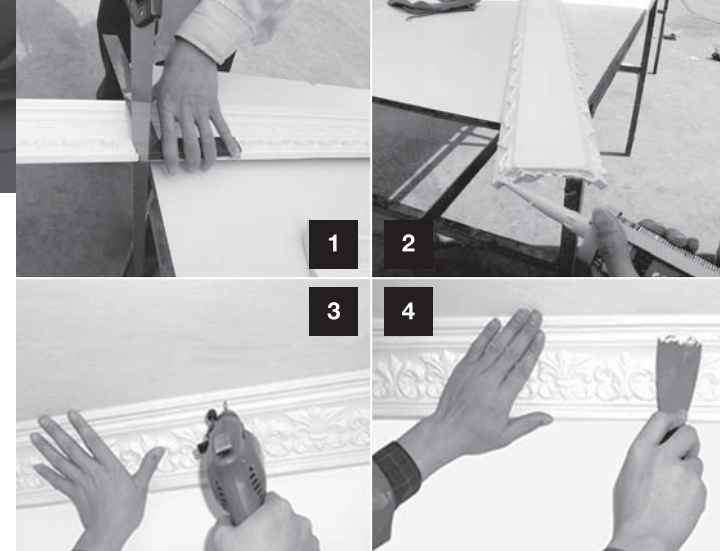
- Calculate the quantity required by measuring the room's perimeter, adding 10% to allow for waste during cutting.

#### Step 2

- Install the interior and exterior corners with sealant and screw into place with 2-1/2 inch (6 cm) drywall (gypsum) screws, or larger, depending on the structure.
- It is preferable to center the dividers in the middle of an 8 foot (244 cm) space. Secure the divider with acrylic latex sealant with silicon and screw into place with 2-1/2 inch (6 cm) drywall (gypsum) screws, or larger, depending on the structure.

#### Step 3

- Measure the distance between the blocks and cut the moulding with a finishing saw, taking care to add 1/4 inch (0.6 cm) for each 8 feet (244 cm) of length, or 1/32 inch (1 mm) per foot (30 cm) of length. Put in place and curve lightly to verify accuracy. **Photo #1**
- Remove the moulding and apply a line of sealant on any areas that will come into contact with the wall and ceiling, as well as on both ends. **Photo #2**
- Install the moulding, press firmly and screw into place. **Photo #3**
- Remove any excess sealant at the top or bottom of the moulding with a damp sponge. This will glue the moulding in place and prevent shrinking.
- Fill in the screw holes with wood filler to conceal. **Photo #4**
- Sand as needed and finish.



### 2- CROWN MOULDINGS ONLY

#### Step 1

- Calculate the quantity required by measuring the room's perimeter, adding 10% to allow for waste during cutting.
- If you are doing corners, it is important to allow for a loss of approximately 12 inches (30 cm) for each interior corner of the room if you are using a crown moulding that is 5-1/2 inches (14 cm) wide, or larger.

#### Step 2

- Cut the moulding with a finishing saw, taking care to add 1/4 inch (0.6 cm) for each 8 feet (244 cm) of length, or 1/32 inch (1 mm) per foot (30 cm) of length. Put in place and curve lightly to verify accuracy. **Photo #1**
- Apply a line of sealant on any areas that will come into contact with the wall and ceiling, as well as on both ends. **Photo #2**
- Install the moulding, press firmly and screw into place. **Photo #3**
- Remove any excess sealant at the top or bottom of the moulding with a damp sponge. This will glue the moulding in place and prevent shrinking.
- Fill in the screw holes with wood filler to conceal. **Photo #4**
- Sand as needed and finish.